



SA'S PREMIUM
CNC
MANUFACTURER

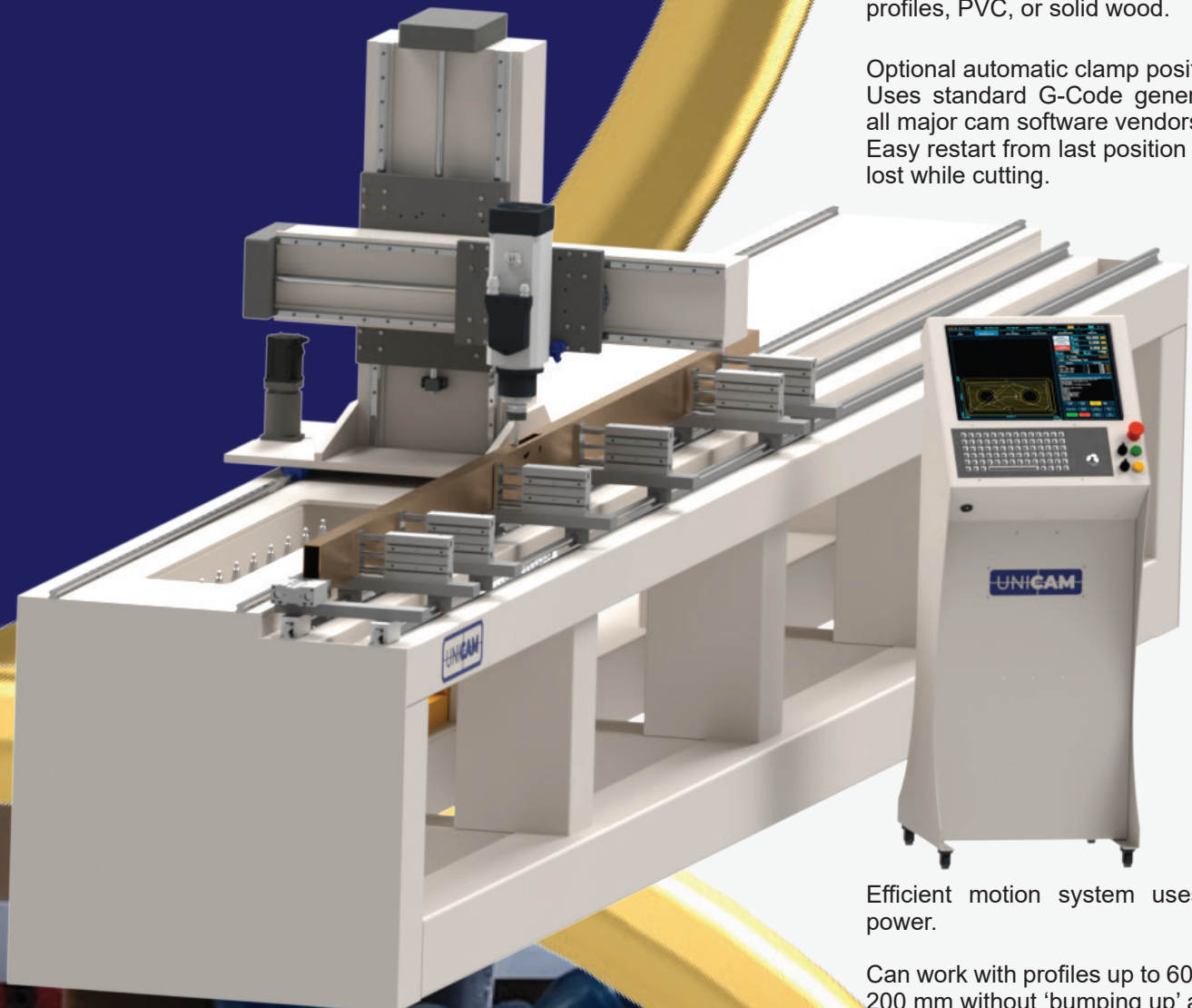
Rhino (Umkhombe)

Machining Center

Clamps | ATC | Safety Doors

This unit is ideal for machining aluminium profiles, PVC, or solid wood.

Optional automatic clamp positioning.
Uses standard G-Code generated from all major cam software vendors.
Easy restart from last position if power is lost while cutting.



Efficient motion system uses minimal power.

Can work with profiles up to 6000 x 200 x 200 mm without 'bumping up' and comes with a multitude of options, including rigid tapping.

[See website for details.](#)

MADE IN SOUTH AFRICA

Head Office (Cape Town): +27 (0)21 555 3247

Gauteng Office: +27 (0) 74 808 4036

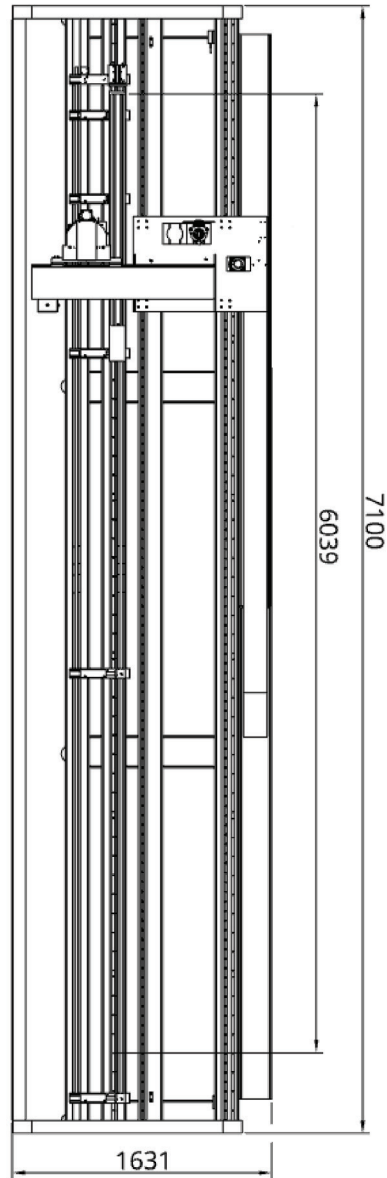
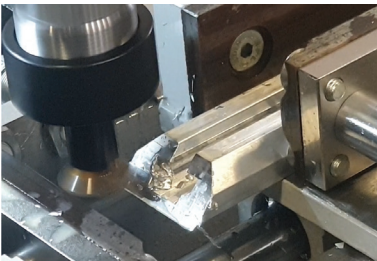
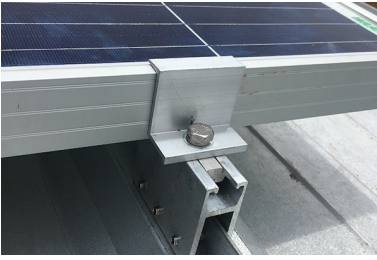
Leaflet Rhino Clamping 20240520

Head Office (Cape Town): +27 (0)21 555 3247

Gauteng Office: +27 (0) 74 808 4036

Rhino

Clamps | ATC



SA'S PREMIUM
CNC
MANUFACTURER

SPECIFICATIONS

Max Material Size:	6040 x 200 x 200 mm
Securing System:	Clamping System
Spindle Power:	7.5 9.5 11.5 KW
Spindle Max RPM:	18000 24000
Spindle Type:	MTC ATC
Spindle Cooling:	Air Cooled
Tool Station:	8 Tool Umbrella plus 2 aggregate units (can include saw)
Tool Probe:	Yes
Max Feed Rate:	40 M/Min
Max Cutting Rate:	20 M/Min
Tool Cooling:	Misting Flood Cooling
Dust Foot:	Optional if cutting wood
Frame Material:	Epoxy Coated Mild Steel
Power:	380v 3PH 25 A
Compressed Air:	6-8 Bar

OPTIONS

Table: Steel T-Slot for working with steel | Adjustable Vices bolted to Steel T-Slot Bed for any material | Clamping System for working with wood, aluminium, and light steel profiles.

Bed Size: 6040 x 200 x 200 | 3040 x 200 x 200 | Custom.

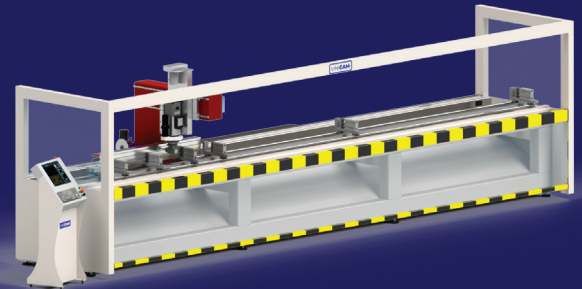
The Spindle: Manual Tool Changer | Auto Tool Changer | C-Axis (to rotate aggregate units) | Birotary Spindle (5 Axis)

Spindle Power: 7.5 KW | 9.5 KW | 11.5 KW).

Cutter Cooling / Lubrication: Flood | Misting.

Servo Motor Power: 750W for normal applications | 2KW for application requiring high speed G0 moves.

Safety: Vertical sliding safety door (Yellow & Black) | Light Curtain (does not protect against flying swarf)



email: sales@unicam.co.za

Website: www.unicam.co.za

Head Office (Cape Town): +27 (0)21 555 3247

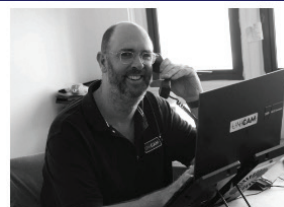
Gauteng Office: +27 (0) 74 808 4036



Jean-Marc Duquenoy
Managing Director



Alan Welsford
Founder / CEO



Glen St Joseph
Technical Director



Sadha Govender
Sales Engineer (Gauteng)

